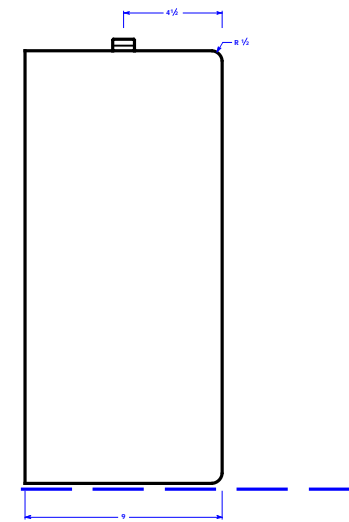
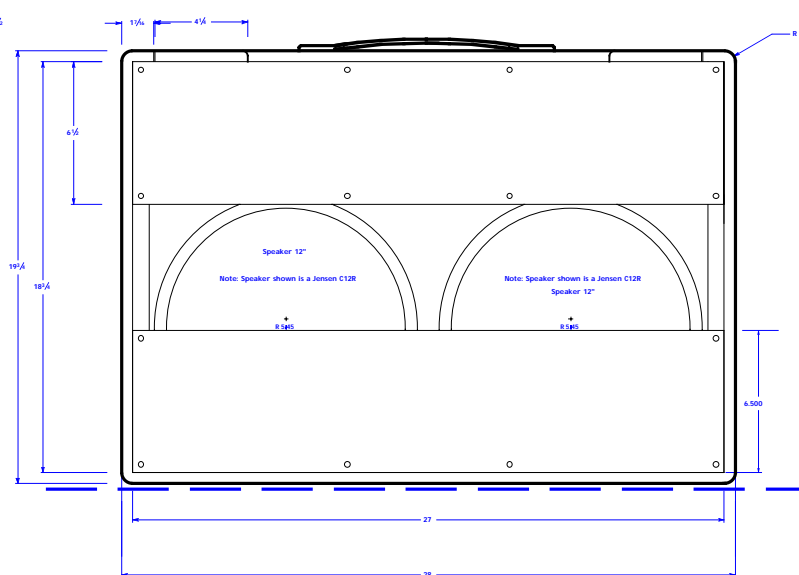
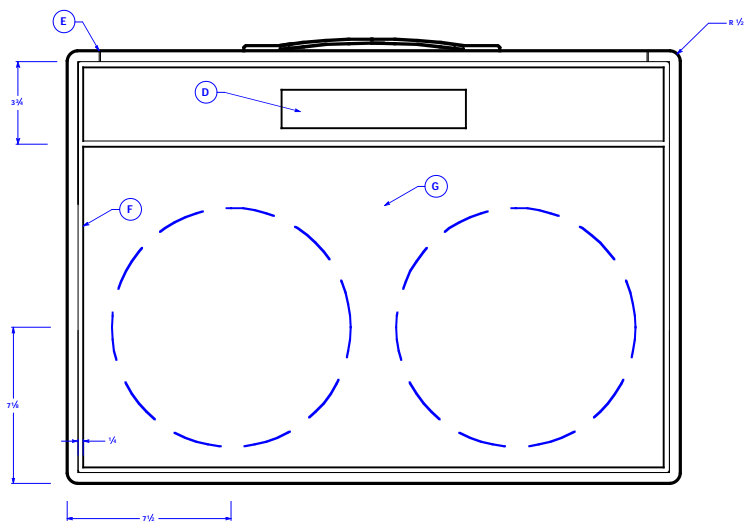
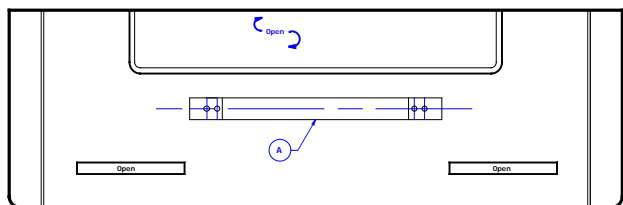
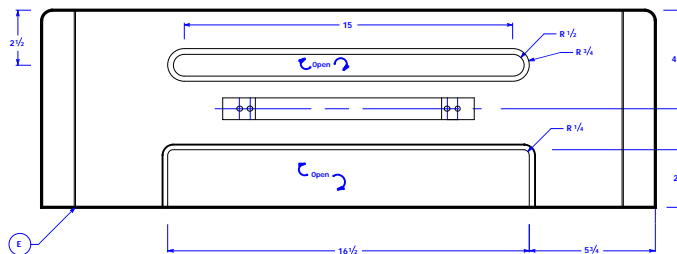


- Notes:
- A) Typical "Marshall" handle
 - B) Vox vents, size and location
 - C) Valence Panel
 - D) Nameplate, size T.B.D.
 - E) Gold piping
 - F) White Piping
 - G) Grill cloth, 1962 reissue



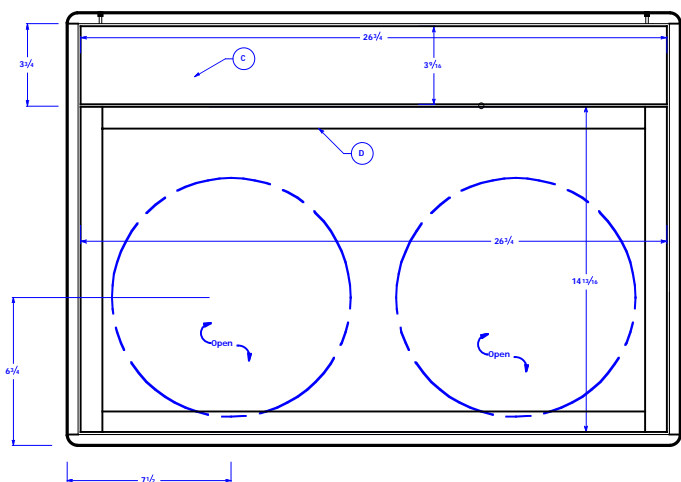


Early Cabinet Layout

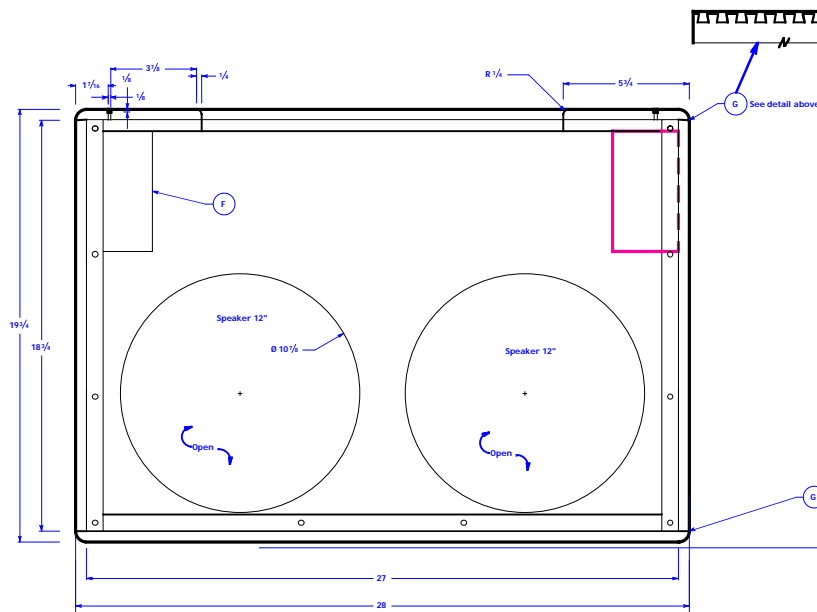


Top View

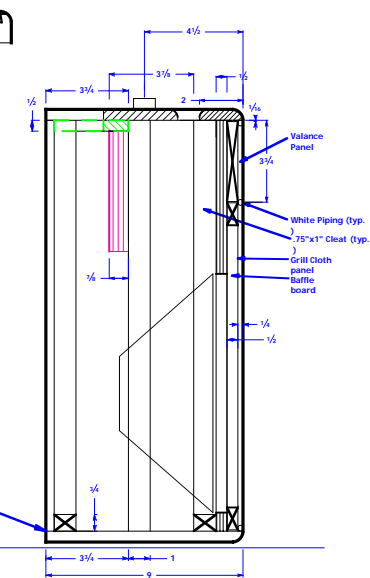
- Notes:
- A) Typical "Marshall" handle
 - B) Vox vents
 - C) Valence Panel
 - D) Grill Cloth frame
 - E) 1/8" x 1/8" Slot for Gold piping
 - F) Chassis mount
 - G) Join by half blind dovetail



Front View



Rear View



Section View